

Oval Runner, Fill and Seal Machine CM 100

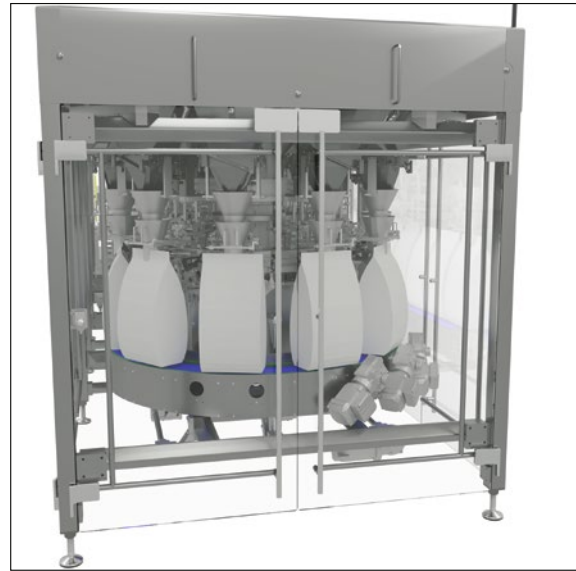
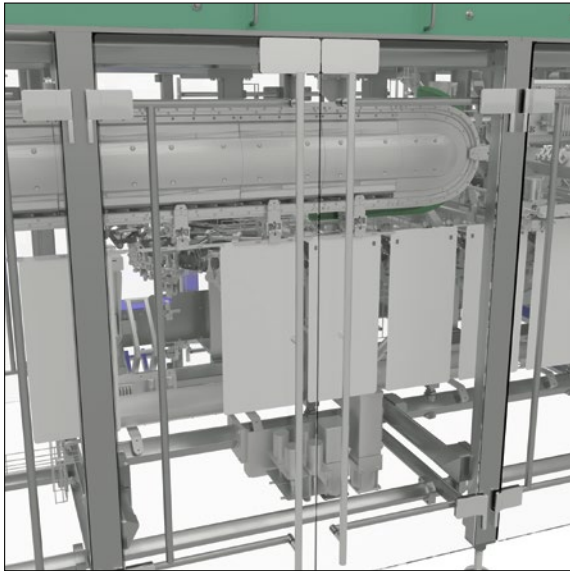
Continuously operating oval runner for filling of pre-made flat, stand-up and side-gusset pouches with large volumes. Automated and quick format changeover.

Applications: Food, Pet Food, Liquids, Household.

- Ideal for large filling weights and volumes (up to 7,25 kg / 14 l)
- Performance increase compared to intermittent systems
- Automated format changeover in less than 5 minutes without change parts
- Ultrasonic sealing of the top seam
- Innovative pouch magazin, pre-designed for automatic loading
- Suitable for various dosing systems such as multi-head weigher, flow meter, pumps etc.
- Expandable with pouch making machine



Uniquely customized.
Uniquely economical.



Technical details CM 100

Specifications	CM 100
Pouch size [mm]	Width 180 - 300 Length 270 - 640
Machine output [Pouches/min.]	up to 70* * depending on filling characteristics and pouch size
Packing material	sealable laminated film
Safety equipment	acc. to the international safety regulations e.g. CE , UL, CSA, OSHA
Electricity power [KWh]	depending on application
Electricity supply	3 x 400/230V + N + PE, 50/60 HZ
Voltage [V]	400 / 230 / 24
Air consumption	depending on application
Machine dimensions L x W x H [mm]	ca. 9.400 x 2.200 x 2.800 ¹⁾

¹⁾ Depending on configuration. Technical modifications reserved.

Standard equipment

- Ultrasonic sealing technology
- Automatic gripper adjustment
- Fully automatic format change
- Innovative Pouch magazine
- Pouch support in filling and sealing area
- 19" HMI
- Machine in hygienic design and stainless steel execution

Optional equipment

- Printer synchronization / Labeler synchronization
- Pouch making part
- Liquid dosing / Multihead weigher synchronization
- Evacuation / Gassing with nitrogen
- Automated loading of magazine
- (further details on request)

